

# SHCET

# SHCET

## PRODUCT CATALOGUE FOR SOLAR DC ELECTRIC





# SHCET

## Products Contents

1. DC Circuit Breaker.....	P01-02
2. DC SPD.....	P03-06
3. AC SPD.....	P07-10
4. DC Fuse.....	P11-14
5. DC Isolating Switch .....	P15-18
6. Dual Power Automatic Transfer Switch.....	P19-20
7. Voltage Protector.....	P21-22
7. PV Combiner Box.....	P23-26
8. Solar Connector.....	P27-28
9. Solid State Relay.....	P29-32
10. Energy Storage.....	P33-36

## Professional Manufacturer For LED And Electric

SHCET founded in 2007, which is one of the most reliable manufactures for Electric Products.

Our factory located in Xingguang Industry Park, Liushi town, Yueqing City, named Yueqing CET Electric Co., LTD.

We mainly produce DC MCB, DC MCCB, DC SPD, DC Fuse, DC Isolating Switch, Solar Connector, DC Combiner Box and AC MCB, RCCB, MCCB, AC Contactor, AC SPD, Energy Meter, Distribution Box, Terminal Block, electrical materials..etc..

Our factory passed ISO9001 product quality system inspection and all of our products have obtained CB,CE, ROHS, BIS, TUV, international quality approvals.

Our company's greatest wealth is not money, but the credit.

Our promise to customers:

We provide superior quality and good price products;

We provide fast and high quality services;

We uphold sincere communication and effective solution when customers have any problem.

Welcome and appreciate your opinions and suggestions at any time. Lets build trustful and joyful long-terms cooperation together.

## COMPANY HISTORY





### Cylindrical Fuse Link

Fuse Size	Rated Voltage	Current Range
10*38	DC 1000V	32A



## SHPV-32 DC Fuse Holder

Item	DC Fuse Holder
Model Number	SHPV-32L/SHPV-32H with indicator
Pole	1P
Rated Current(In)	1A, 2A, 4A-10A, 12A-16A, 20A, 25A, 30A, 32A
Fuse Link Size	10x38
Rated Voltage	DC1000V
Breaking Capacity(KA)	20
Working Temperature( C )	-30~+70
Class Operation	gPV
Time Constant	1-3ms
Protection Class/Degree	IP20
Standard	IEC60269-6
Installation Class/Type	Class II/DIN rail



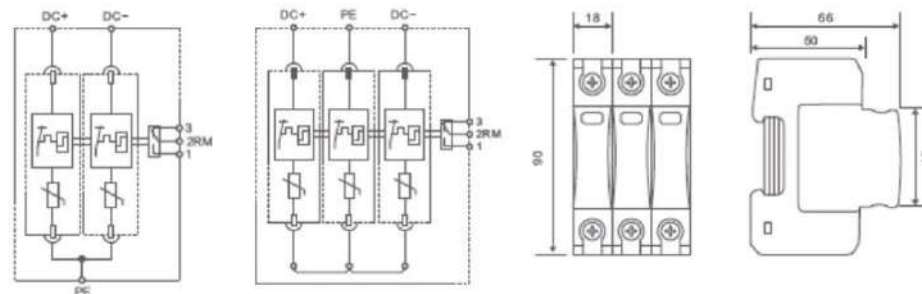
## SHPV-63L-1451B DC Fuse Holder

Item	DC Fuse Holder
Model Number	SHPV-63L-1451B
Pole	1P
Rated Current(In)	DC1000V: 8A-15A, 20A-32A, 40A, 50A DC1500V: 8A-15A, 20A-32A
Fuse Link Size	14x51
Rated Voltage	DC1000V/DC1500V
Breaking Capacity(KA)	25
Working Temperature( C )	-30~+70
Class Operation	gPV
Time Constant	1-3ms
Protection Class/Degree	IP20
Standard	IEC60269-6
Installation Class/Type	Class III/DIN rail



## T2-DC SPD

Type	CET-T2-DC 2P / 3P
Rated voltage (max. continuous a.c. voltage) [ UC ]	800VDC / 1000VDC / 1200VDC
Nominal discharge current (8/20) [ In ]	20kA
Maximum discharge current (8/20) [ Imax ]	40kA
Voltage protection level [ Up ]	1000VDC: ≤4.0kV 1200VDC: ≤4.5kV
Follow current extinguishing capability at UC [ If ]	32A fuse will not be triggered at 2kA 255V
Response time [ tA ]	≤25ns
Max.backup.fuse(L)	200A gL/gG
Max.backup.fuse(L')	125A gL/gG
TOV.voltage	355V / 5sec
Operating temperature range (parallel wiring) [ Tup ]	-40 C...+80 C
Operating temperature range (through wiring) [ Tus ]	-40 C...+60 C
Cross-sectional area	35mm <sup>2</sup> solid / 50mm <sup>2</sup> flexible
Mounting on	35mm DIN rail
Enclosure material	UL94-V0
Dimension	18mm
Test standards	IEC 61643-1; GB 18802.1; YD/T 1235.1
Certification	CE ROHS ISO9001 TLV
Type of remote signalling contact	Switching contact
Switching capacity a.c	250V / 0.5A
Switching capacity d.c	250V / 0.1A; 125V/0.2A; 75V/0.5A
Cross-sectional area for remote signalling contact	Max. 1.5mm <sup>2</sup> solid / flexible





**T2-AC SPD**

Type	CET-T2-AC 1P / 2P / 3P / 4P
Rated voltage (max.continuous a.c.voltage) [ UC ]	275V or 385V
Nominal discharge current (8/20) [ In ]	20kA
Maximum discharge current (8/20) [ Imax ]	40kA
Voltage protection level [ Up ]	275Vc1.5kV 385Vc1.8kV
Follow current extinguishing capability at UC [ If ]	32A fuse will not be triggered at 2kA 255V
Response time [ tA ]	≤25ns
Max backup fuse(L)	200A gL/gG
Max backup fuse(L-L')	125A gL/gG
TOV voltage	355V / 5sec
Operating temperature range (parallel wiring) [ Tup ]	-40 C...+80 C
Operating temperature range (through wiring) [ Tus ]	-40 C...+60 C
Mounting on	35mm DIN rail
Enclosure material	UL94-V0
Width/Pole	18mm
Test standards	IEC 61643-1; GB 18802.1; YD/T 1235.1
Certification	CE ROHS IS09001 TUV
Type of remote signalling contact	Switching contact
Switching capacity a.c	250V / 0.5A
Switching capacity d.c	250V / 0.1A; 125V/0.2A; 75V/0.5A
Cross-sectional area for remote signalling contact	Max. 1.5mm <sup>2</sup> solid / flexible

